

<sup>TM</sup> Scribble <sup>PVT. LTD.</sup>  
CONCEPTO

THE CORE OF USABILITY

# Objective

Our objective is to develop and maintain a business environment in which any organisation can achieve its strategic and mission goals through design strategy & execution excellence

THE CORE OF USABILITY  
**Scribbol**  
CONCEPTO

## **Managing the Management**

Management is a business discipline that uses project management, design, strategy and supply chain techniques to control a creative process, to build a structure and organisation

## Our Services

- Exhibition & Events
- Interior
- Advertising
- Creative
- Photography
- 2D/3D Graphics Design
- Animation & Walkthrough
- Visual Merchandise
- Signage Design
- Product Design
- Corporate Presentation
- Site Decor
- AV Presentation
- Documentary

**Scribble** CONCEPTS  
THE CORE OF USABILITY

Installations & Promotions

Gayatri Ruia, Director, Palladium, says, "The tree is truly mesmerizing and creates the excitement of secrecy and wishes coming true, which perfectly marks the start of the festive season."

Forevermark Diamond  
Christmas Installation  
Palladium 2013

Scribble  
THE ART OF VISUALITY





#scribblepad



The Installation  
@  
ISEE LOUNGE  
MUMBAI  
2022 . DEC



#scribblepad

The Installation  
@  
ISEE LOUNGE  
MUMBAI  
2022 . DEC





The Installation  
@  
ISEE LOUNGE  
MUMBAI  
2022 . DEC

CCI MEMBERS NIGHT 2013



Scribble  
THE CORE OF USABILITY

CCI MEMBERS NIGHT 2013

BCCI - CCI NIGHT 2013



RUBY  
THE BOOK LAUNCH

GEMFIELDS  
Mumbai  
Ministry of New



RUBY  
THE BOOK LAUNCH

GEMFIELDS  
Mumbai  
Ministry of New



PGI BSM 2017  
CHENNAI



PGI BSM 2017  
CHENNAI

# LOGO DESIGN

## Logo breakdown



Graphic form of hand shake symbolizing give and take.



Arrow representing aim.



Equal sides representing Balance of mind which comes from Enlightenment.



Graph representing growth.

**Scribb**  
THE CORE OF USABILITY

[www.scribbleconcepto.com](http://www.scribbleconcepto.com)





VMG™

MANAGEMENT PVT. LTD.

Boundless . Committed . Pragmatic

VMG



GRAPHIC DESIGN  
VISUAL COMMUNICATION

Hey...

it's  
**MANGO TIME**

RAW Mangoes are rich in vitamin A and C, calcium, iron and 82% of magnesium which is vital for the extraction of wastes in the body. "Raw mangoes contain an acid which helps ease digestion and control constipation. They also help the skin soften and breathe making it healthy.

We use all antimicrobial herbs and spices, such as mustard seed, garlic, cinnamon or clove to make the pickle.

**PURELY HOME MADE**

**HOME MADE PICKLES ARE AWESOME**

CONTACT FOR HOME DELIVERY  
M : +91 9820170802

**pickle** TO PICKLE

**A P I C K L E**  
SCRIBBL COMMUNICATION

INFO GRAPHICS

INFO GRAPHICS

COLD  
PRESSED  
MUSTARD OIL

CONTACT FOR HOME DELIVERY  
M : +91 9820170802

**a** | pickle TO GIGGLE

EVERYTHING IS **HOME MADE** HERE  
EXCEPT THE BOTTLE

CLOVE  
CUMIN  
FENNEL  
BLACK SEED  
FENUGREEK  
BLACK PAPPER  
CEINNAMON

It's  
**MANGO TIME**

& it's  
**COMPLETELY HOME MADE**

A PICKLE  
SCRIBBL COMMUNICATION

INFO GRAPHICS

it's  
**MANGO TIME**

HOME MADE  
PICKLES

COLD  
PRESSED  
MUSTARD OIL



**a** PICKLE TO GIGGLE

A PICKLE  
SCRIBBL COMMUNICATION

For more details connect +91 9820170802

PICKLE CAN BE IDENTIFIED BY ITS TEXTURE

EVERYTHING IS HOME MADE HERE  
EXCEPT THE BOTTLE

BROCHURE DESIGN

PRECISION WIRES  
SCRIBBL COMMUNICATION

Registered Office

LAKSHMI NAGAR, 11, ROAD 17, FLOOR 17,  
OFF GROUND ROAD, PHASE 2, BANGS,  
HYDRABAD 500 023, INDIA.  
Tel: +91 92 260 74001  
Fax: +91 92 260 74002 / 260 74003  
E-MAIL: [precisionwires@rediffmail.com](mailto:precisionwires@rediffmail.com) / [precisionwires@rediffmail.com](mailto:precisionwires@rediffmail.com) / [precisionwires@rediffmail.com](mailto:precisionwires@rediffmail.com)  
[precisionwires@rediffmail.com](mailto:precisionwires@rediffmail.com) / [precisionwires@rediffmail.com](mailto:precisionwires@rediffmail.com)

WEBSITE : [www.precisionwires.com](http://www.precisionwires.com)



Copyright © Precision Wires India Limited



to any length...

PRECISION WIRES INDIA LIMITED

# BROCHURE DESIGN

- ISO 9001:2015 Certified for Quality Management System
- ISO 14001:2015 Certified for Environmental Management System
- ISO 45001:2018 Certified for Occupational Health and Safety Management System
- ISO 27001:2017 Certified for Information Security Management System
- ISO 9001:2015 Certified for Quality Management System
- ISO 14001:2015 Certified for Environmental Management System
- ISO 45001:2018 Certified for Occupational Health and Safety Management System
- ISO 27001:2017 Certified for Information Security Management System



- ISO 9001:2015 Certified for Quality Management System
- ISO 14001:2015 Certified for Environmental Management System
- ISO 45001:2018 Certified for Occupational Health and Safety Management System
- ISO 27001:2017 Certified for Information Security Management System

**Precision Wires India Limited :**

Established in 1982, Precision Wires India Limited is a leading manufacturer of high performance electrical wires and cables. The company is ISO 9001:2015, ISO 14001:2015, ISO 45001:2018 and ISO 27001:2017 certified. The company is a member of the Indian Wire & Cable Association (IWCA) and the Indian Electrical Manufacturers Association (IEMA).

**Exports**

Exports to various countries including USA, Canada, UK, Australia, Middle East, Africa, etc.

**Certification & Recognitions**

Member of Indian Wire & Cable Association (IWCA) and Indian Electrical Manufacturers Association (IEMA).

• ISO 9001:2015 Certified  
• ISO 14001:2015 Certified  
• ISO 45001:2018 Certified  
• ISO 27001:2017 Certified

**Expanded Product Offering Wires**

• ISO 9001:2015 Certified  
• ISO 14001:2015 Certified  
• ISO 45001:2018 Certified  
• ISO 27001:2017 Certified

**Technical Details**

Wire Size	Conductor	Insulation	Temperature	Voltage
1.5	7/0.2	PVC	70°C	250V
2.5	7/0.25	PVC	70°C	250V
4	7/0.32	PVC	70°C	250V
6	7/0.4	PVC	70°C	250V
10	7/0.5	PVC	70°C	250V
16	7/0.63	PVC	70°C	250V
25	7/0.8	PVC	70°C	250V
35	7/1.0	PVC	70°C	250V
50	7/1.25	PVC	70°C	250V
70	7/1.6	PVC	70°C	250V
95	7/2.0	PVC	70°C	250V
120	7/2.5	PVC	70°C	250V
150	7/3.15	PVC	70°C	250V
185	7/4.0	PVC	70°C	250V
240	7/5.0	PVC	70°C	250V
300	7/6.3	PVC	70°C	250V
350	7/8.0	PVC	70°C	250V
400	7/10.0	PVC	70°C	250V



BROCHURE DESIGN



USHA MAERTIN  
SCRIBBL COMMUNICATION

BROCHURE DESIGN - MACHENICAL



MAS INDUSTRIES PVT LTD  
SCRIBBL COMMUNICATION

BROCHURE DESIGN – COMPLETE LIFT



MAS INDUSTRIES PVT LTD  
SCRIBBL COMMUNICATION

BROCHURE DESIGN – ELECTRICAL



MAS INDUSTRIES PVT LTD  
SCRIBBL COMMUNICATION

BROCHURE DESIGN – CABINS





Lift Cabin

3D rendering of the lift cabin showing the interior and exterior design.



NEW HOY

3D rendering of the lift cabin showing the interior and exterior design.



PRECISION WIRES INDIA LIMITED



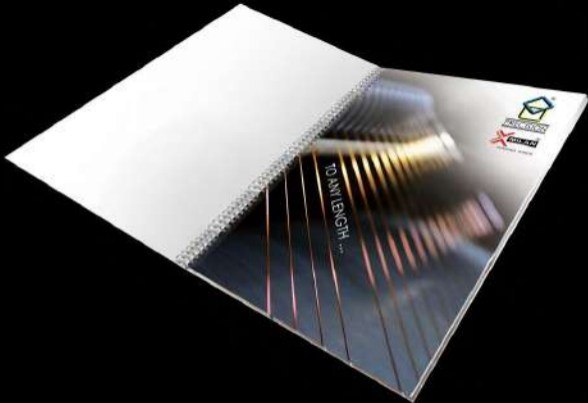
Registered Office:

PRECISION WIRES INDIA LIMITED  
MILAN HOUSE, 3A, 34A, 37B,  
OFF. SATYAG ROAD, PERAMBUR,  
TAMILNADU 600 025, INDIA.

TEL. + 91 - 44-2994 / 2407 021 / 2407 099 03494  
FAX. + 91 - 44-2995 / 7407 562

E-MAIL: [marketing@precisionwires.com](mailto:marketing@precisionwires.com)  
WEBSITE: <http://www.precisionwires.com>







# The Company PRECISION WIRES INDIA LIMITED

2010  
2011  
2012  
2013  
2014  
2015  
2016  
2017  
2018  
2019  
2020  
2021  
2022  
2023  
2024  
2025  
2026  
2027  
2028  
2029  
2030  
2031  
2032  
2033  
2034  
2035  
2036  
2037  
2038  
2039  
2040  
2041  
2042  
2043  
2044  
2045  
2046  
2047  
2048  
2049  
2050

2020  
2021  
2022  
2023  
2024  
2025  
2026  
2027  
2028  
2029  
2030  
2031  
2032  
2033  
2034  
2035  
2036  
2037  
2038  
2039  
2040  
2041  
2042  
2043  
2044  
2045  
2046  
2047  
2048  
2049  
2050

2020  
2021  
2022  
2023  
2024  
2025  
2026  
2027  
2028  
2029  
2030  
2031  
2032  
2033  
2034  
2035  
2036  
2037  
2038  
2039  
2040  
2041  
2042  
2043  
2044  
2045  
2046  
2047  
2048  
2049  
2050



2020  
2021  
2022  
2023  
2024  
2025  
2026  
2027  
2028  
2029  
2030  
2031  
2032  
2033  
2034  
2035  
2036  
2037  
2038  
2039  
2040  
2041  
2042  
2043  
2044  
2045  
2046  
2047  
2048  
2049  
2050

2020  
2021  
2022  
2023  
2024  
2025  
2026  
2027  
2028  
2029  
2030  
2031  
2032  
2033  
2034  
2035  
2036  
2037  
2038  
2039  
2040  
2041  
2042  
2043  
2044  
2045  
2046  
2047  
2048  
2049  
2050



### Product Range ELECTRICAL WIRING WIRE



#### Assembled Round Wiring Wire

2020  
2021  
2022  
2023  
2024  
2025  
2026  
2027  
2028  
2029  
2030  
2031  
2032  
2033  
2034  
2035  
2036  
2037  
2038  
2039  
2040  
2041  
2042  
2043  
2044  
2045  
2046  
2047  
2048  
2049  
2050

1. 1.5mm x 1.5mm x 0.5mm
2. 2.0mm x 2.0mm x 0.5mm
3. 2.5mm x 2.5mm x 0.5mm
4. 3.0mm x 3.0mm x 0.5mm
5. 4.0mm x 4.0mm x 0.5mm
6. 5.0mm x 5.0mm x 0.5mm
7. 6.0mm x 6.0mm x 0.5mm
8. 8.0mm x 8.0mm x 0.5mm
9. 10.0mm x 10.0mm x 0.5mm
10. 12.0mm x 12.0mm x 0.5mm
11. 14.0mm x 14.0mm x 0.5mm
12. 16.0mm x 16.0mm x 0.5mm
13. 18.0mm x 18.0mm x 0.5mm
14. 20.0mm x 20.0mm x 0.5mm
15. 25.0mm x 25.0mm x 0.5mm
16. 30.0mm x 30.0mm x 0.5mm
17. 35.0mm x 35.0mm x 0.5mm
18. 40.0mm x 40.0mm x 0.5mm
19. 45.0mm x 45.0mm x 0.5mm
20. 50.0mm x 50.0mm x 0.5mm
21. 60.0mm x 60.0mm x 0.5mm
22. 70.0mm x 70.0mm x 0.5mm
23. 80.0mm x 80.0mm x 0.5mm
24. 90.0mm x 90.0mm x 0.5mm
25. 100.0mm x 100.0mm x 0.5mm
26. 120.0mm x 120.0mm x 0.5mm
27. 150.0mm x 150.0mm x 0.5mm
28. 180.0mm x 180.0mm x 0.5mm
29. 200.0mm x 200.0mm x 0.5mm
30. 250.0mm x 250.0mm x 0.5mm
31. 300.0mm x 300.0mm x 0.5mm
32. 350.0mm x 350.0mm x 0.5mm
33. 400.0mm x 400.0mm x 0.5mm
34. 450.0mm x 450.0mm x 0.5mm
35. 500.0mm x 500.0mm x 0.5mm
36. 600.0mm x 600.0mm x 0.5mm
37. 700.0mm x 700.0mm x 0.5mm
38. 800.0mm x 800.0mm x 0.5mm
39. 900.0mm x 900.0mm x 0.5mm
40. 1000.0mm x 1000.0mm x 0.5mm
41. 1200.0mm x 1200.0mm x 0.5mm
42. 1500.0mm x 1500.0mm x 0.5mm
43. 1800.0mm x 1800.0mm x 0.5mm
44. 2000.0mm x 2000.0mm x 0.5mm
45. 2500.0mm x 2500.0mm x 0.5mm
46. 3000.0mm x 3000.0mm x 0.5mm
47. 3500.0mm x 3500.0mm x 0.5mm
48. 4000.0mm x 4000.0mm x 0.5mm
49. 4500.0mm x 4500.0mm x 0.5mm
50. 5000.0mm x 5000.0mm x 0.5mm





## ARKEMA COATING RESINS

SYNOLAC • UNITHANE • SYNOCURE • SYNGCRYL • CRAYAMID



**ARKEMA**  
INNOVATION ASSOCIATION

**ARKEMA**

### A GLOBAL RESOURCE FOR COATING RESINS & ADDITIVES

Arkema Coating Resins develops, manufactures and sells coating resins and additives for architectural and industrial coatings, including powder coatings, water paints, transparent, opaque and reflective coatings, concrete surface protection, and construction products, tiles and grout, ink, maintenance products, and coatings for metals, non-metals and leather. Product categories include: solvent, acrylic, epoxy-urethane, and acrylic, and water-based acrylic, vinyl acetate, and polyurethane.

Headquarter in Guy, North Carolina, USA, Arkema Coating Resins is a business unit of Arkema Inc. and employs approximately 1,800 people worldwide, working in close call to performance research, chemical engineering, sales, marketing, processing, customer service and production.

- SYNOLAC** Long oil alkyd  
 medium oil alkyds  
 Short oil alkyds  
 Short oil non-oxidizing alkyds
- UNITHANE** Urethane modified alkyd resins
- SYNOLAC** Isocyanate polyester resins  
 2 pack hydroxyl functional polyester resins
- SYNOCURE** 2 pack hydroxyl functional acrylates  
 High solid 2 pack hydroxyl functional acrylates
- SYNGCRYL** Thermoset acrylates  
 Thermoplastic acrylates
- CRAYAMID** Liquid reactive polyurethanes



**DISCLAIMER:** The information contained in this document is based on trials carried out on our industrial system and data selected from the literature. It is provided to provide general information on our products and their uses. It shall in no event constitute warranty from our part concerning specific properties of the products or their suitability for a particular application.

**ARKEMA**  
INNOVATION ASSOCIATION

Arkema Coatings India Pvt Ltd  
 2-4321, South Tower Street,  
 H.L.O. Area, Gurgaon, Haryana,  
 India - 122002  
 PH : +91 22 37077500  
 FAX : +91 22 37077598  
 WEB : www.arkema.com



# PHOTOGRAPHY



Product Photo Shoot at Silvasa Factory





Product Photo Shoot at Silvasa Factory



Product photoshoot for SEPL

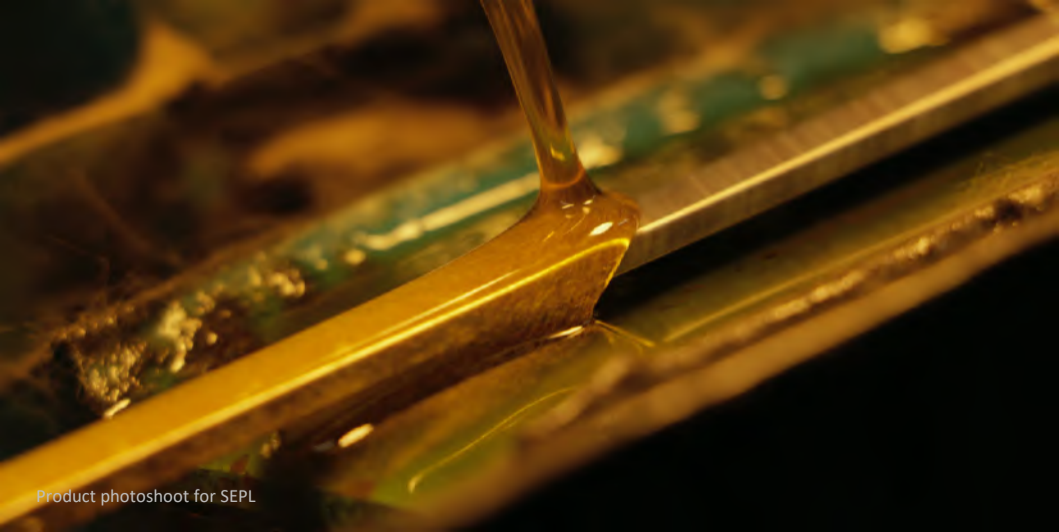


Product photoshoot for SEPL





Product photoshoot for SEPL



Product photoshoot for SEPL



PLATINUM table top shoot

Scribble  
THE CORE OF USABILITY





PLATINUM table top shoot

Scribble  
THE ART OF JEWELRY



Please visit our Instagram page [@GIGPANDAS](#) for more photography

# EXHIBITION DESIGN



ELECAMA  
2023



ELECAMA  
2023





ELEC RAMA  
2023





ELECRAMA  
2023

IDAC  
2023



france  
terra



MADE IN FRANCE



ISEE LOUGE  
2022



ISEE LOUGE  
2022

WITTUR (357 Sqmt)  
ISEE EXPO  
2022



Blain  
ISEE EXPO  
2022



PROLITE AUTOGLO  
FIRE INDIA  
2022







[www.scribbleconcepto.com](http://www.scribbleconcepto.com)

IEE EXPO 2020  
MUMBAI



[www.scribbleconcepto.com](http://www.scribbleconcepto.com)



IEE EXPO 2020  
MUMBAI

IEE EXPO 2020  
MUMBAI



[www.scribbleconcepto.com](http://www.scribbleconcepto.com)







Customised Electrical Insulations for  
LV & HV Motors •  
Generators •  
Transformers •  
Enamelled Copper Wires  
Machines for Enamelled Wire

New Launches

1. 110KV Transformer
2. 220KV Transformer
3. 500KV Transformer
4. 110KV Motor
5. 220KV Motor
6. 500KV Motor
7. Enamelled Copper Wires
8. Machines for Enamelled Wire

INDIA'S

Partners in Progress



OIL TRANSFORMERS









Armstrong( 100 sqmt )  
Acrex 2015



Virdi( 35 sqmt )  
Secutech 2015



Norwood( 50 sqmt )  
ACE TECH 2014

  
**norwood**  
electrically smart



**Scribble**  
THE CORE OF USABILITY



Goel Steel Company( 63 Sqmt)  
Diamould 2014



WITTUR ( 120 sqmt )  
IEE EXPO 2014



Scribble  
THE CORE OF USABILITY



Arkema (96 Sqmt)  
Paint India 2014





Huntsman (80sqmt)  
Paint India 2014





TRIDENT  
IJS 2018

PALAK  
IIJS 2018-19



KGK CREATIONS  
IJS 2018-19





BN Jewellers  
IJS 2018-19





PLATINUM  
IJS 2018-19





Mark  
IIJS 2017





Trident  
IJS 2017



KGK  
IJS 2017



V Chains  
IIJS 2017-18

Platinum Guild International  
IIJS 2015





Platinum Evera International  
IJS 2015



Scribble  
THE ART OF VISUALITY

B N Jewellers  
IJS 2014-2015

**B**  
**B N JEWELLERS**  
GOLD • DIAMONDS • PLATINUM

TOTUKA & SO

IJS

**Scribble**  
THE CORE OF USABILITY

B N Jewelles  
IIJS 2014-2015



Scribble  
THE CORE OF USABILITY

KGK Creations  
IJS 2015



Scribble  
THE CORE OF USABILITY



KGK Creations  
IIJS 2014

# KGK

DTC

ELITE  
FRONTIER

KGK CREATIONS

# KGK

ELITE  
FRONTIER

KGK CREATIONS (INDIA) PVT. LTD.

aisle 50 aisle



Since 1985

Scribb  
THE CODE OF USABILITY



KGK Creations  
IIJS 2013



Scribble  
THE CORE OF USABILITY



V-Chains  
IIJS 2013-2014



Venus Jewels  
IIJS 2013

905-229-0000  
905-229-0000

  
**VENUS JEWEL**  
WORLD LEADERS IN SOLITAIRES



**Scribble**  
THE CORE OF USABILITY



Venus Jewels  
IIJS 2013

Scribble  
THE CORE OF USABILITY



WAB (100 Sqmt)  
Paint India 2014



Scribble  
THE CORE OF USABILITY



Precision Wires (105 Samt)  
Elecrama 2014



Scribble  
THE CORE OF USABILITY



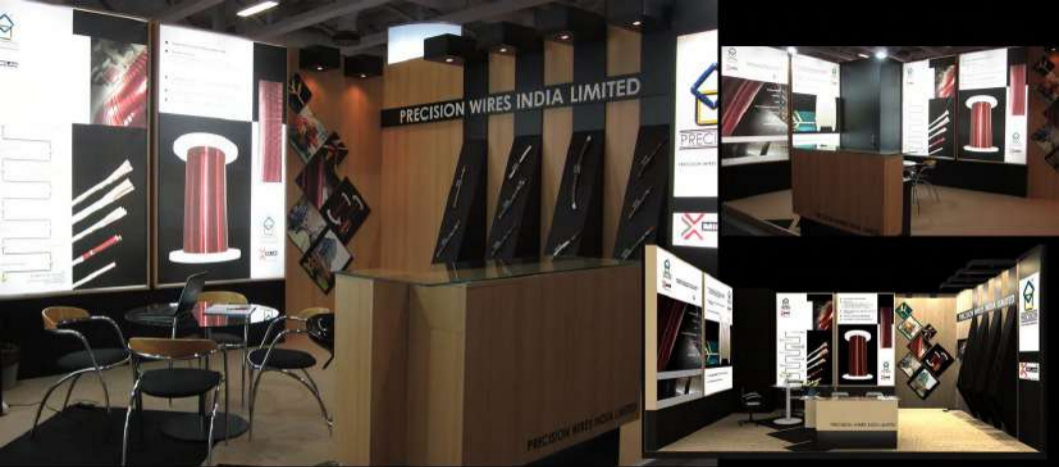


Elecrama 2012  
Precision Wires India Ltd





Elecrama 2012  
Precision Wires India Ltd



CWIEME Berlin 2012  
Precision Wires India Ltd



CWIEME Berlin 2013  
Precision Wires India limited



Silver Emporium  
IIJS 2014-2015



Scribble  
THE CORE OF USABILITY





Scribble  
THE CORE OF USABILITY

Mark Bangles  
IJS 2014 - 2015

**M**  
MARK  
THE MANGALSUTRA

MARK THE MANGALSUTRA

**M**  
MARK  
THE MANGALSUTRA

Mark The Mangalsutra  
IIJS 2014 - 2015

Scribble  
THE CORE OF USABILITY



Mark The Mangalsutra  
IJS 2013



Scribble  
THE CORE OF USABILITY



Mark Bangles  
IIJS 2013



# Site Décor & Construction

Rajesh Life Spaces  
[ Raj Grandeur-Powai ]

ALLOW US  
-TO-  
SPOIL YOU

Raj  
GRANDEUR

.TO.

*SPOIL YOU*

Raj  
GRANDEUR



3000 sqft area landscaping

**Scribble**  
THE LOGO FOR USABILITY



Rajesh Life Spaces ( Raj Grandeur-Powai )

3000 sqft area landscaping



Rajesh Life Spaces( Raj Grandeur-Powai )

20' X 10' entrance signage



9000 sqft area outdoor branding & Security cabin with plantation

Scribble  
THE CORE OF USABILITY

Rajesh Life Spaces( Raj Grandeur-Powai )


Sales office Entrance pathway  
Directional Signage



at  
City PALAVA  
By  
LODHA



Scribble  
THE CORE OF USABILITY



an Extravagance with some extra effort

**Scribble**  
THE CORE OF USABILITY



minimalistic design  
with  
maximum space work



Scribble  
THE CORE OF USABILITY



elegance  
appreciated



SCRIBBLSPACE

Kalpavruksha  
Kemps Corner  
Mumbai

1500 Sqft



SCRIBBL SPACE

Kalpavruksha  
Kemps Corner  
Mumbai

1500 Sqft

Kalpavruksha  
Kemps Corner  
Mumbai

1500 Sqft

SCRIBBLSPACE





SCRIBBL SPACE

Kalpavruksha  
Kemps Corner  
Mumbai

1500 Sqft



SCRIBBL SPACE



Kalpavruksha  
Kemps Corner  
Mumbai

1500 Sqft



SCRIBBL SPACE

Kalpavruksha  
Kemps Corner  
Mumbai

1500 Sqft



Kalpavruksha  
Kemps Corner  
Mumbai

SCRIBBL SPACE

1500 Sqft



RAWAL'S

SCRIBBL SPACE



Oberoi Park View  
Kandivali East  
Mumbai

2060 Sqft



Oberoi Park View  
Kandivali East ( Jitender Jain )  
Mumbai

2360 Sqft



Oberoi Park View  
Kandivali East  
Mumbai

2360 Sqft





Oberoi Park View  
Kandivali East  
Mumbai

2360 Sqft



Oberoi Park View  
Kandivali East  
Mumbai

2360 Sqft



Oberoi Park View  
Kandivali East  
Mumbai

2360 Sqft









Kaladarshan Gems  
Thane  
800 Sqft



PURE · RARE · ETERNAL



PLATINUM

PL

PLATINUM



PLATINUM

Platinum Corner( retail)

PURE · RARE · ETERNAL



PLATINUM

Platinum Corner( retail)



Platinum Corner(etail)  
Joyallukkas

Vizag Showroom



Platinum Corner( retail )  
Dass Jewellers

Nagpur Showroom



Platinum Corner( retail)  
AB Jewels

Ahmedabad Showroom

**Scribble**™ FILED  
CONCEPTO

THE CORE OF USABILITY

The Scribble office



Scribble  
THE CORE OF USABILITY



Reception area





Scribbli  
CONCEPT  
THE CORE OF USABILITY



Reception area



1<sup>st</sup> level corridor



Conference Room

Thank You

<sup>TM</sup> Scribbbl <sup>PVT. LTD.</sup>  
CONCEPTO  
THE CORE OF USABILITY

[www.scribbleconcepto.com](http://www.scribbleconcepto.com)

Haware, Fantacia Business Park,, Commercial Wing, S-178, 2nd Floor,  
Plot-47, Sec-30A, Vashi, Navi Mumbai – 400709  
PH : +91 22 65272720 / 65272722